



# Chapple Municipal Newsletter

## September-October 2024



OFFICE: 487-2354

EMAIL: cao@chapple.on.ca



FAX: 487-2406

WEBSITE: www.chapple.on.ca

Reeve: James Gibson Councillors: Ken Wilson; Philip Schram; Trish Neilson; Rick Neilson

### Ontario Building Code Update - New Larger Size for Certain Sheds

The building code has been revised recently to allow storage sheds meeting **ALL 6** of the following descriptions to be built with **NO BUILDING PERMIT**:

1. The area of ground covered by the shed is 15 square meters or less (approximately 160 square feet)
2. Shed is used by a single-family dwelling to store belongings only – *no other uses are permitted.*
3. Shed is located away from other structures (6 feet is generally acceptable)
4. Shed is supported on or near the ground
5. Shed has no plumbing in it.
6. Shed meets Zoning Bylaw requirements for lot coverage, yard location, setbacks from property lines and maximum height.

#### FAQ's:

1. Does this apply to commercial or industrial sheds? **NO**
2. Does this apply to additions to existing sheds? **NO**
3. Does this apply to decks? **NO**
4. Does this apply to porches or gazebos or an outdoor kitchen? **NO**
5. Does this apply to farm buildings? **NO**
6. Does this apply to a guest cabin? **NO**
7. Does this apply to a raised hunting shelter or kids' playhouse? **NO**
8. Can I build more than 1 shed if each is under 15 square meters?

**YES**, if they are not connected or very close together and they meet zoning rules. If you do not understand all the requirements, ask your Building Official before planning your project. If your project does not require a Building Permit, the Building Official must inform you of this. *Henry Van Ael, CBCO Chief Building Official, 807-276-0473*



### The 2024 Final Property Tax Bills were due Friday, August 31, 2024

We accept: Cheque, Cash, EFT or E-Transfer

Credit card payments can be made using ePayment on our website [www.chapple.on.ca](http://www.chapple.on.ca)

### Fall Village Clean-up Tuesday, October 8, 2024,

Items that will be picked up include Branches, Yard Waste Debris & Large Items Please note that all fridges & freezers need to be tagged that the Freon has been removed before they will be accepted.



**RESIDENTIAL ONLY!**

#### OFFICE WILL BE CLOSED \* CIVIC HOLIDAY \*

Labour Day- Monday, September 2<sup>nd</sup>, 2024  
Reconciliation Day -Monday, September 30<sup>th</sup>, 2024  
Thanksgiving Day – Monday, October 14<sup>th</sup>, 2024

#### NEXT COUNCIL MEETINGS:

Tuesday September 10<sup>th</sup>, 2024  
Tuesday October 8<sup>th</sup>, 2024  
Tuesday November 12<sup>th</sup>, 2024  
Meetings begin @ 9 A.M. and are held in the Council Chambers @ 54 Barwick RD.

#### 2024 Livestock Valuers:

Gary Sliworsky 807-482-1570  
Katie Hay 807-275-6273  
Melissa Teeple 807-275-9922  
Harold Kelly 705-606-4251

Farmers **do not** move - cover the animal until a Livestock Valuer can arrive.



Come to the Municipal Office to **sign** your **Snow Plowing Agreement** outstanding accounts must be paid & agreement signed before we plow – \$31.25 per visit.

# Thank You

Council and Staff would like to Thank our Summer Employees

Connor Barron (Labourer)

Duncan King (Museum Attendant)

**NO HUNTING on Municipal Property or on Unopened Road Allowances**

#### Fitness Centre Memberships are available at the Municipal Office

- \*Single/week: \$30 plus \$20/access fob
- \* Single/Month: \$40 plus \$20/access fob
- \* Single/6 Month: \$60 plus \$20/access fob
- \* Single/year: \$100 plus \$20/access fob
- \* Family: \$150/year plus \$20/access fob
- \* \$25 per fob to replace lost access fobs
- \* Access Fobs are needed to access the gym and you must be a member to enter gym.

*This document is available in alternate format upon request.*

**Bylaw 1294 (2002 Roads Standards Bylaw)** outlines the levels of service by the Municipality and indicates that the Municipality **does not** cover the costs of maintaining or upgrading the roads beyond their classification/the minimum standards indicated in the bylaw. **“Earth Roads”** are **NOT** maintained by the Municipality and should be used at **your own risk**.

## BURN PERMITS

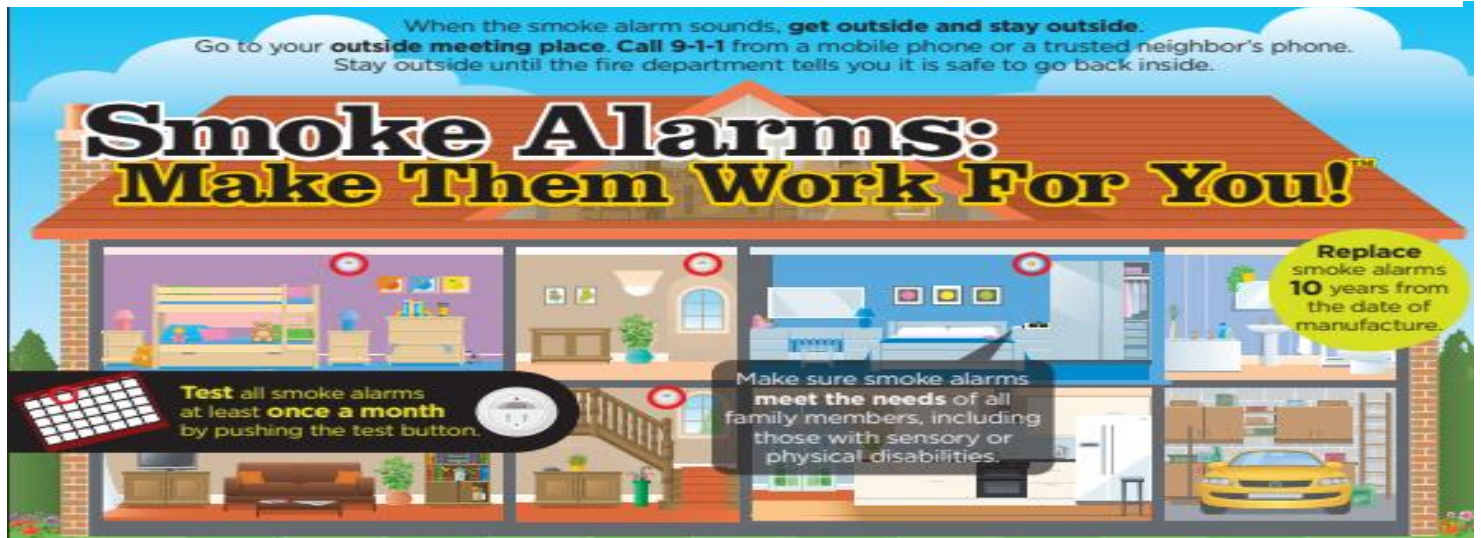
Are to be purchased online

<https://chapple.burnpermits.com>

Permits are needed from January 1<sup>st</sup> to December 31<sup>st</sup>



## Fire Prevention Week is October 6-12, 2024 – Smoke Alarm Safety



### Testing and Maintenance

- Test smoke alarms at least once a month by pushing the test button.
- Follow the manufacturer's instructions for cleaning to keep smoke alarms working.

### Replacement

- Smoke alarms with non-replaceable (long-life) batteries are designed to remain effective for up to 10 years. If the alarm chirps, warning that the battery is low, replace the entire smoke alarm right away.
- For smoke alarms that do not have non-replaceable (long-life) batteries, replace batteries at least once a year. If the alarm chirps, replace only the battery.

### What is your alarm telling you?

#### SMOKE ALARMS

- A continued set of three loud beeps—beep, beep, beep—means smoke or fire. Get out, call **9-1-1**, and stay out.
- A single "chirp" every 30 or 60 seconds means the battery is low and must be changed.
- All smoke alarms must be replaced after 10 years.
- Chirping that continues after the battery has been replaced means the alarm is at the end of its life and the unit must be replaced.

#### CARBON MONOXIDE (CO) ALARMS

- A continuous set of four loud beeps—beep, beep, beep, beep—means carbon monoxide is present in your home. Go outside, call **9-1-1** and stay out.
- A single chirp every 30 or 60 seconds means the battery is low and must be replaced.
- CO alarms also have "end of life" sounds that vary by manufacturer. This means it's time to get a new CO alarm.

### Smoke Alarms

- ▶ Install smoke alarms in every bedroom, outside each sleeping area, and on every level of the home, including the basement.
- ▶ For the best protection, choose interconnected smoke alarms. When one sounds, they all sound.
- ▶ Test alarms at least once a month using the test button
- ▶ Replace smoke alarms if they are over 10 years old.

### Carbon Monoxide (CO) Alarms

- ▶ Install CO alarms outside each separate sleeping area and on every level of the home. This includes the basement and attic. Do not place alarms near fireplaces or fuel-burning appliances. Check to see what the law is in your community for placement.
- ▶ Replace CO alarms between 5-10 years or as stated in the manufacturer's instructions.



**NATIONAL FIRE PROTECTION ASSOCIATION**  
The Leading Information and Knowledge Resource on Fire, Electrical, and Related Hazards

For more cooking safety tips visit [Fire Prevention Week \(FPW\) \(nfpa.org\)](https://www.nfpa.org)

**Prepare Now** Take the following steps so you and your family are prepared in the event of an emergency. Winterize your home to retain heat: insulate walls and attics; caulk or weather-strip doors and windows; install storm windows or cover windows with plastic; Get heating equipment and chimneys cleaned and inspected once a year; Add extra blankets and warm clothes to your emergency survival kit.

## Winter storms kill more Canadians than tornadoes, thunderstorms, lightning, floods, and hurricanes

### Safety Tips

- Avoid unnecessary travel.
- Wear layers of lightweight clothing, mittens and a hat (preferably one that covers your ears)
- Wear waterproof, insulated boots to keep your feet warm and dry and to keep from slipping on ice and snow
- Regularly check for frostbite — numbness or white areas on your face and body (ears, nose, cheeks, hands, and feet in particular)
- Avoid overexertion when shoveling snow by taking frequent breaks
- Bring pets inside and move livestock to sheltered area with non-frozen drinking water

### Office of the Fire Marshal and Emergency Management

The Office of the Fire Marshal and Emergency Management works to keep people safe and secure by coordinating with other organizations to prepare for emergencies and respond to them when they happen.



### Hazard Information

Heavy snowfall and ice can make the roads treacherous and interrupt the power supply.

You can check local weather and forecasts online.

Interactive maps, road conditions and driving information is available through Traveller Information Services.

Check with your local school board for information on cancelled classes and buses.

Check with your local municipality for information on snow removal services and special rules in place during a snow emergency.

